



# Tapey Snapper

- Regular Tapey
- O-Ring Tapey
- Flat Tapey
- Block Tapey
- Shoulder Tapey
- Big Tapey

# Tapey Snapper

Major market/Usage: Casual wears, Sports wears, Baby wears, Interior and outdoor goods.

The plastic snaps are injection molded into the tape, making it almost impossible to fall out.

It can be easily attached with a sewing machine, with no need of attaching dies and machines, making it safer and easier.

**Example # 8TS - DP21 P.50** Snap : Polyacetal / Tape : Polyester

① ② ③ ④ ⑤

① Snap Diameter (mm)

② Snap Shape

③ Tape Type

④ Tape Width (mm)

⑤ Snap Pitch (mm)

③ Tape Type/ DP : Textured yarn, S : Spun yarn, IR : Russel

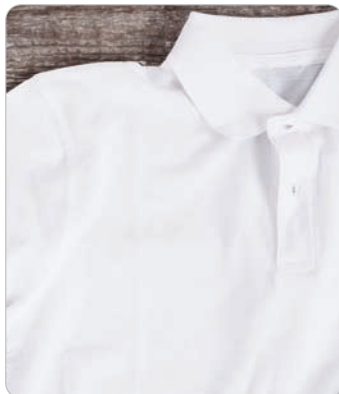
## ● 80 Standard Colors for Tape and Snaps

T01	T02	T03	T04	T05	T06	T07	T08
T09	T10	T11	T12	T13	T14	T15	T16
T17	T18	T19	T20	T21	T22	T23	T24
T25	T26	T27	T28	T29	T30	T31	T32
T33	T34	T35	T36	T37	T38	T39	T40
T41	T42	T43	T44	T45	T46	T47	T48
T49	T50	T51	T52	T53	T54	T55	T56
T57	T58	T59	T60	T61	T62	T63	T64
T65	T66	T67	T68	T69	T70	T71	T72
T73	T74	T75	T76	T77	T78	T79	T80

Tape is available in DTM colors.

# Tapey Snapper Regular Tapey

Having a firm opening action force, it has been widely used for baby, kids and inner wears.



Tape Width Snap Diameter		18mm	21mm	25mm
		8TS = 8mm	DP / S	DP / S
10TS = 10mm		-	DP / S	DP / S

**Tape Type** DP/S    **Snap Pitch** 19,20,25mm.....

**8TS-DP21 P.50**



**10TS-DP21 P.50**



## Tapey Snapper O-Ring Tapey

Flatter and thinner snaps with a stronger opening action force compared to the Regular Tapey.



Snap Diameter \ Tape Width		18mm	21mm	25mm
8RT = 8mm		S	S / IR	S
10RT = 10mm		-	S / IR	S
13RT = 13mm		-	-	S

Tape Type S/IR Snap Pitch 25,30,35mm.....

**10RT-S21 P.50**



## Tapey Snapper Flat Tapey

Our thinnest and lightest range of tapey snappers, this item is suitable for light fabrics and materials.

Snap Diameter \ Tape Width		21mm	25mm
8FS = 8mm		S / IR	S
10FS = 10mm		S / IR	S

Tape Type S/IR Snap Pitch 25,30,35mm.....

**10FS-IR21 P.50**



# Tapey Snapper

## Block Tapey

Good substitute for velcro, this item has no hook surface making it less likely to scratch and damage the fabric. By increasing the number of blocks, it can also be used as an adjuster.



	Tape Width	21mm
Snap Diameter		
10BLK = H10×W12mm		IR

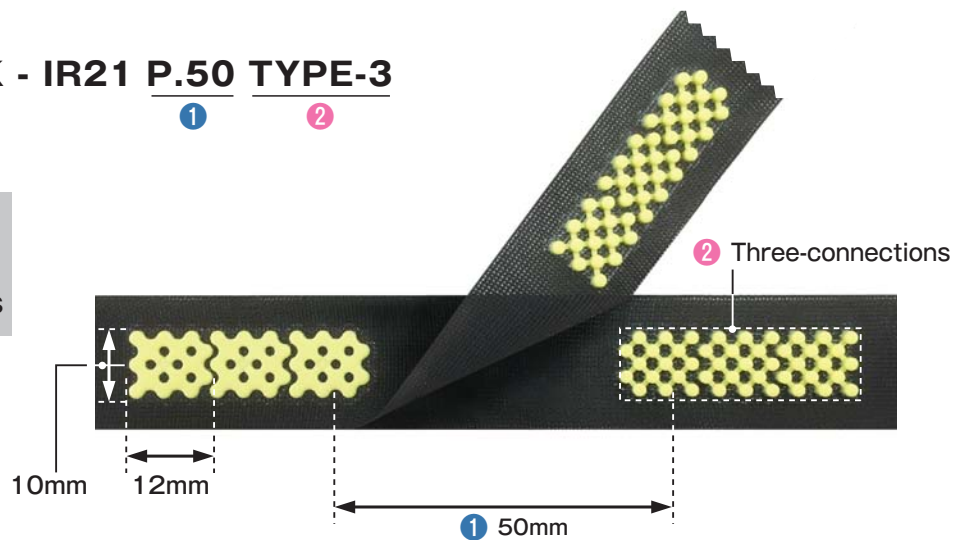
Tape Type IR

Snap Pitch 12,15,20,25mm.....

### Example # 10BLK - IR21 P.50 TYPE-3

① Snap Pitch (mm)

② Quantity of Continuous Blocks



### 10BLK-IR21 P.50 TYPE-1



### 10BLK-IR21 P.50 TYPE-3



# Tapey Snapper Shoulder Tapey

The A type has both female and male snaps on the same side, making it suitable for holding dresses and inner wear straps.

The B type has the female and male snaps on separated sides, having been used mainly on shoulder pads.

## Color Variation



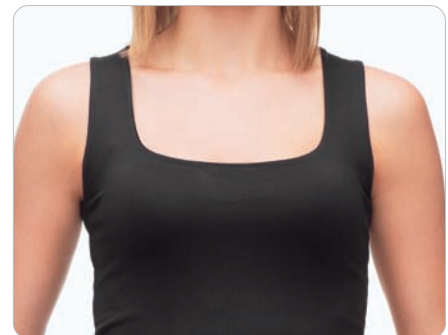
01 White



150 Beige



80 Black



## Type A



5TS-DP7-65 Bias Cut



5TS-DP7-30 Bias Cut

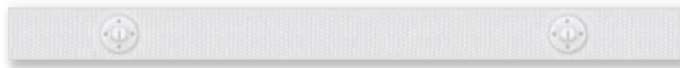
	Tape Width	7mm
Snap Diameter		DP
5TS = 5mm		

Tape Type DP Snap Pitch 30, 65mm

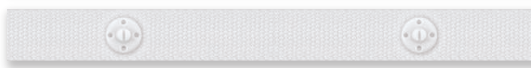
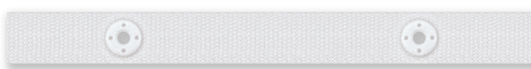
## Type B



5TS-DP7-60 Straight Cut



5TS-DP7-40 Straight Cut



	Tape Width	7mm
Snap Diameter		DP
5TS = 5mm		

Tape Type DP Snap Pitch 40, 60mm

# Tapey Snapper

## Big Tapey

Regular BT type and OW one way opening type available.  
OW type can be used on camping tents, hospital curtains.



Tape Width	25mm	40mm
Snap Diameter	DP	-
15BT/OW = 15mm	DP	-
23BT/OW = 23mm	-	DP

Tape Type DP Snap Pitch 15BT/OW:25, 30mm.....  
23BT/OW:30, 35mm.....

**15BT-DP25 P.50**



**23OW-DP40 P.60**

